



The Montgomery

**Parade of
HOMES**

Lot M2
9230 Sheraton Park Way

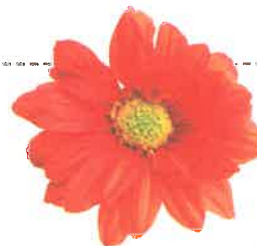
4 Bedrooms, 2 ½ Baths
2,392 ± Square Feet

Built By **Lowder New Homes**
Marketed By **Lowder New Homes Sales, Inc.**
Sharon Waid
328-5618



NEW PARK

A Jim Wilson and Associates, LLC Development



Jim Wilson & Associates, LLC



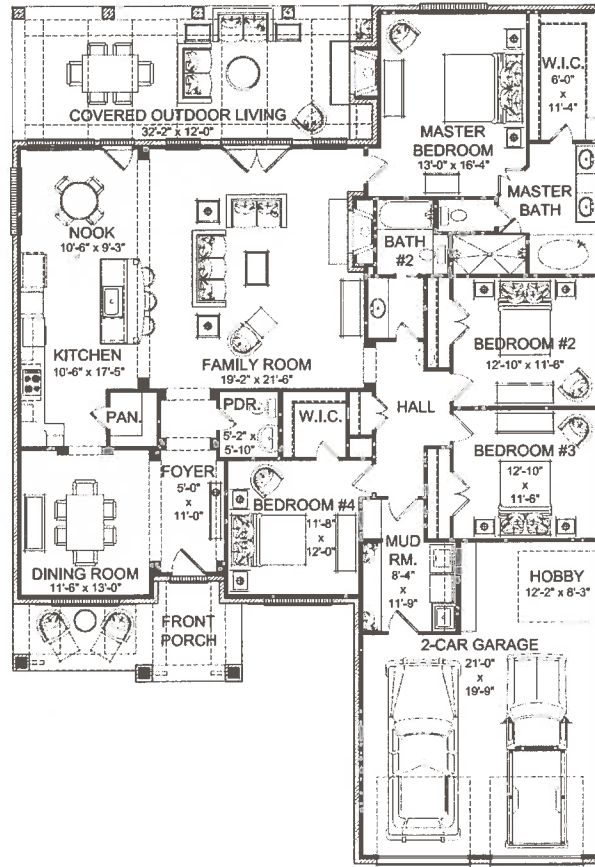


The Montgomery

Lot M2
9230 Sheraton Park Way

4 Bedrooms, 2 ½ Baths
2,392 ± Square Feet

Built By **Lowder New Homes**
Marketed By **Lowder New Homes Sales, Inc.**
Sharon Waid
328-5618



Floorplans and elevations are artist's renderings for illustration purposes only. Features, colors and sizes are approximate and will vary from the homes as built. Square foot dimensions are approximate. Terms and Conditions Apply. Please see a sales representative for details.

NEW PARK

A Jim Wilson and Associates, LLC Development



Jim Wilson & Associates, LLC

